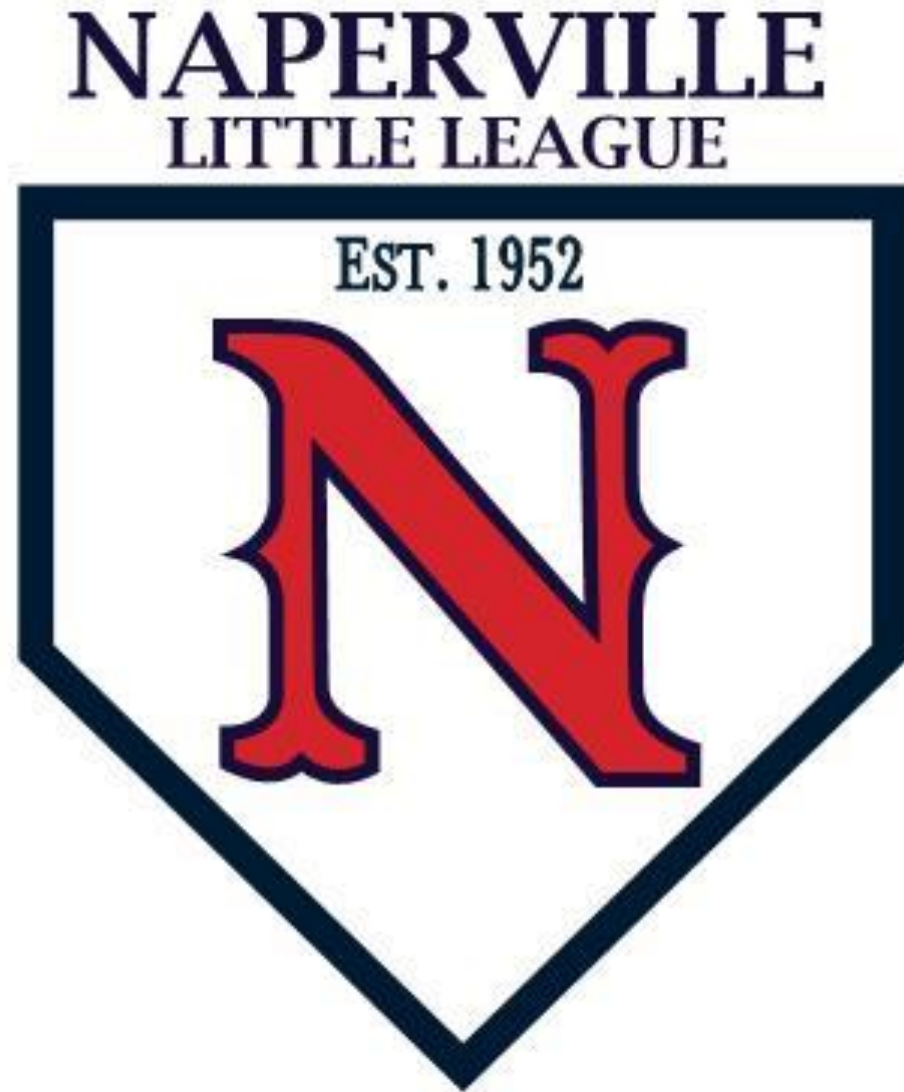


2024 Majors
AA and
Supreme AA
Manager
Meeting



2024 NLLB Board of Directors

Contact information is on the website or click [here](#) to access contact information.

President: David Page

Vice President: Jim Meurer

Continental League Director: Jeff Calihan

National League Director: Doug Spitler

Republic League Director: Eddie Adams

Director of Operations: Lisa O'Rear



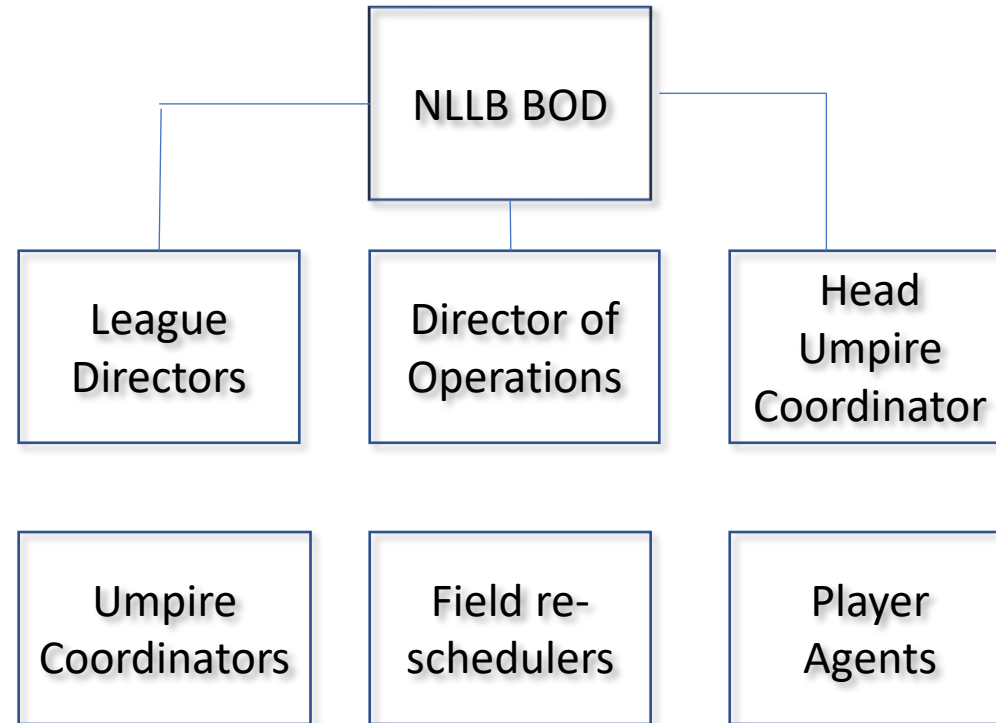
2024 Managers

YOU are the face of the league

- 10 Majors AA Managers
- 14 Supreme AA Managers
- Thank you for all you do. We are here to help and get you what you need to be successful.
- MIGS. Are you on the list? Are your assistants on the list?
- Anyone volunteering in any capacity must register as a volunteer and submit to a YEARLY background check. Why do we do this?
- Information is on the website: Coaches & Volunteers/Register to be a Coach or Volunteer. Click [here](#) to become a 2024 MIGS.
- Beginning in 2024 Little League International is requiring volunteers to perform Abuse Awareness Training. Please click [here](#) for details and to complete the training.



Structure of Naperville Little League



Continental League Director: Jeff Calihan, jcalihan@nllb.org

National League Director: Doug Spitler, dspitler@nllb.org

Republic League Director: Eddie Adams, eadams@nllb.org

Junior League Director: Stefan Rand, srand@nllb.org

Director of Operations: Lisa O'Rear, lorear@nllb.org

Head Umpire Coordinator: Ginny McCormack, vmccoramack@nllb.org

THOUGHT FOR THE DAY:
LE MAKES A LOUSY UMBRELLA



Game Cancellations

- If cancelled by NPD or NLLB, an e-mail blast from system will notify everyone and your game will be rescheduled. No other action is required on your part unless you want to follow up with your team to make sure they received the message.
- If **NOT** cancelled by NPD or NLLB, go to the game in uniform or you will risk a forfeit.
 - Review NPD Field Maintenance guide
 - If you and the other manager cancel due to field conditions, call your Umpire Coordinator and Field Re-scheduler. Click [here](#) to locate contact information.
 - Do NOT leave an umpire at the field
- Your game will be rescheduled to the next available day/time teams and field are available. NO EXCEPTIONS.
- If weather becomes an issue, you will have 3-4 games per week, sometimes 3 games in a row and more 8pm games than originally scheduled.
- Information on Game Cancellation procedures, Field Re-schedulers contact information and Umpire Coordinator contact information can be found on the website: Coaches & Volunteers/Coaches Resources or, click [here](#).



Call-Ups

- League Directors or Player Agents handle call-ups when you are short players.
 - Juniors pulls from Majors AA or Majors A
 - Majors AA pulls from Majors A or Supreme AA (**LLA 10 year old**)
 - Majors A pulls from Supreme A/AA
 - Supreme AA pulls from Supreme A
 - Supreme A pulls from Rookies AA
- Rules for call-ups
 - They wear their own uniform
 - They must bat last
 - They cannot play more defensive innings than a regular player
 - They cannot pitch or catch



Adult Game Coordinators

- Must have when umpire is under 18
- Must be a MIGS
- Home team provides Adult Game Coordinator
- Must be introduced to the umpire before the game
- Assists umpire with tough decisions if needed
- Information on responsibilities of Adult Game Coordinator can be found on the website: Coaches & Volunteers/Coaches Resources or, click [here](#).

Game Day Procedures

- No more than 3 coaches in the dugout
- Home team occupies 3B dugout
- Visiting team preps the field, home team breaks it down
- Pull bases and insert base plugs
- Repair the mound and batter's box after games
- Dugouts and storage rooms - CLEAN UP AFTER YOURSELVES
- Keypad at Beach and Knoch 5 – code is 3961 *Nike and Dupage will have keypads soon
- Lockbox code is 1245 at Nike and Dupage (Nike and Dupage SHOULD have keypad by April 1)
- PUT THE KEY BACK IN THE LOCKBOX
- Close equipment boxes and secure storage room doors.



Score booths

- No child(ren) are to be in the score booths without adult supervision at all times. **NO EXCEPTIONS**
- **CLEAN UP AFTER YOURSELVES;** dugouts, score booths, storage room – **Put a Parent in charge**
 - **Trash is thrown away**
 - **If trash is full, empty it**
 - **Floor is swept, seeds shells are not discarded on the floor**
 - **If chalk is spilled, sweep it up**
 - **Close windows in score booths**
 - **Turn off fans in score booths**
 - **Turn off score boards**
 - **Turn off lights**
- If brooms, dust pans and garbage cans need to be replaced (they do go missing), reach out to Lisa
- Secure score booth door - **Parent in charge**
 - **IF WE CAN'T DO SIMPLE THINGS, WE CAN'T HAVE NICE THINGS.**



Field Maintenance

- NPD owns them, we rent them. The better job we do taking care of them, the more willing NPD will be to rent to us and do for us.
- No more than 4 bags of turface should be used on a field at one time. If you have to use that much, then do not play/practice on the field.
- Repair the mound and batters box after games and practices.
- If chalk/turface is low, e-mail Lisa to let her know, she is our contact with NPD. Please do not call NPD directly.
- If need turface/chalk that day, visit another major field to retrieve, but don't leave that location without any supplies.
- Dirt and grass stay separated.
- NPD is installing cameras to prevent theft.
- Information on Field Maintenance can be found on the website: Coaches & Volunteers/Coaches Resources or, click [here](#).



Dupage 5 – Turf Field



Naperville Park District™

WELCOME TO DUPAGE RIVER SPORTS COMPLEX SYNTHETIC TURF FIELD 5

This field was developed through a partnership between the Naperville Park District and Naperville Little League Baseball. Please help to protect this community asset by observing the following rules:

1. Field use by groups of 10 or more participants requires a permit. Permit-holders have priority use at all times. See below for field rental information.
2. Water is the only beverage permitted. No other food or drinks, including but not limited to soda, sport drinks, sunflower seeds, or gum is allowed on the synthetic turf. Glass containers are prohibited.
3. Naperville Park District parks and facilities are smoke and tobacco-free. Smoking is restricted to designated vehicle parking areas and adjacent streets where parking is permitted.
4. Metal spiked shoes are not allowed on the synthetic turf. Clean athletic shoes (free of mud) and plastic cleats are permissible.
5. Only freestanding field markers and sports equipment may be used on the synthetic turf. No stakes, posts, poles or markers of any kind may be driven into the field.
6. Tables and chairs are not allowed on the synthetic turf.
7. Golfing, shot putting, javelin or discus throwing is prohibited on the synthetic turf.
8. During athletic competitions all spectators must remain in designated spectator areas.
9. Whenever the Lightning Warning siren and strobe light activates, all activity must be suspended and all persons must move to a place of safety until the all-clear signal sounds.
10. Wheeled devices, including but not limited to motorized vehicles, bicycles, wagons, inline skates, scooters and skateboards are not allowed on the synthetic turf.
11. Pets are not allowed within the fenced areas.

Report any damage, vandalism or unauthorized use of the facility to Park Police at 630-601-0925. In an emergency, call 911.

SYNTHETIC TURF FIELD RENTALS

The synthetic turf field and the field lighting are available for rental. A permit is required for organized team activities. Groups of 10 or more wishing to use the synthetic turf field must obtain a permit to use the field. Please contact the Naperville Park District at 630-848-5000 for fees and availability.



Naperville
Park District™

PROTECT YOUR TURF



SUNFLOWER SEEDS



FOOD



METAL CLEATS



CHEWING GUM



TOBACCO PRODUCTS



DRIVING STAKES

630-848-5000 • NAPERVILLE.PARKS.ORG



NO METAL CLEATS

Dupage 5 – Turf Field

WELCOME TO DUPAGE RIVER SPORTS COMPLEX SYNTHETIC TURF FIELD 5 This field was developed through a partnership between the Naperville Park District and Naperville Little League Baseball. Please help to protect this community asset by observing the following rules:

- 1. Field use by groups of 10 or more participants requires a permit. Permit-holders have priority use at all times.
- 2. Water is the only beverage permitted. No other food or drinks, including but not limited to soda, sport drinks, sunflower seeds, or gum is allowed on the synthetic turf. Glass containers are prohibited.
- 3. Naperville Park District parks and facilities are smoke and tobacco-free. Smoking is restricted to designated vehicle parking areas and adjacent streets where parking is permitted.
- 4. Metal spiked shoes are not allowed on the synthetic turf. Clean athletic shoes (free of mud) and plastic cleats are permissible.
- 5. Only freestanding field markers and sports equipment may be used on the synthetic turf. No stakes, posts, poles or markers of any kind may be driven into the field.
- 6. Tables and chairs are not allowed on the synthetic turf.
- 7. Golfing, shot putting, javelin or discus throwing is prohibited on the synthetic turf.
- 8. During athletic competitions all spectators must remain in designated spectator areas.
- 9. Whenever the Lightning Warning siren and strobe light activates, all activity must be suspended and all persons must move to a place of safety until the all-clear signal sounds.
- 10. Wheeled devices, including but not limited to motorized vehicles, bicycles, wagons, inline skates, scooters and skateboards are not allowed on the synthetic turf.
- 11. Pets are not allowed within the fenced areas.

Safety

- Do not risk injuries; take a player out of the lineup if they get hurt. You can inset them back in the lineup later if feeling better. They will be skipped in the lineup and will NOT be an out
- Lightning: There are lightning detectors at major fields, once they sound, everyone goes to their car and waits for the all clear sound. Don't risk it; if you see lightning, take cover immediately
- No peanuts in the dugout
- No warmups with bat during the game (no donuts, no on-deck circle)
- Male catchers must wear cups and throat guards
- Managers/coaches can warm up pitchers.
- All bats must have USA baseball sticker, please check before the game.
 - 1st offense: dead ball, batter out, team loses a base coach
 - 2nd offense: dead ball, batter out, manager ejected



Little League International Rules and Local Rules

- LLI rule book governs all games. Local rules can be found on the website: Coaches & Volunteers/Coaches Resources or, click [here](#).
- Some notable rules:
 - No new inning can start after 1 hour and 45 minutes except in the case of a tie. See local rules for details.
 - Two (2) mound visits per inning and the second one you must pull the pitcher. Three (3) mound visits max to a pitcher during the game.
 - Slaughter rule is 10 runs after 3.5 innings for home team. You can keep playing, but the game report should be completed and is final when a winner is determined. Pitch count is still active but not recorded for days of rest calculation.
- Pitch counts. Get someone to handle on your team and check with the other coach every half inning.
 - Full day rest = full day of rest
 - 20 pitches or less = 0 days rest
 - 21-35 pitches = 1 day rest
 - 36-50 pitches = 2 days rest
 - 51-65 pitches = 3 days rest
 - 66-75 pitches (max) for supreme aa and 85 pitches (max) for majors aa = 4 days rest
 - If a pitcher throws 41 or more pitches, he cannot catch in the same day. If a catcher catches 4 or more innings, he cannot pitch in the same day.
 - All pitchers get 8 warm up pitches in their 1st inning and thereafter they are subject to a 1 min time limit between ½ innings.
 - Roll back rule: your pitcher can finish the batter and roll back to limit. For example, a pitcher starts a batter with 33 pitches and throws 6 pitches to that batter before he is replaced. The official pitch count recorded is 35, not 39.

Game Changer Procedure

- All NLLB teams will be using Game Changer this year
- NLLB created your team; invites were sent in January
- Input your rosters
- Use this version of the app (see logo to the left)
- **Score only up to official game, nothing after slaughter rule**
- Schedule will be added. If reschedule, you need to update
- “Last batter First Pitch #” to help with role back rule
- If intentional walk, issue 4 balls, not “intentional walk”
- Be sure to change pitchers in GC. If you forget, be sure to email your LD and opposing coach to let them know.
- Home team is responsible for scoring the game. If neither team scores the home team will forfeit.
- Both teams can score the game. First team to log in will be official score that is added to GC standings
- Game Report Coordinator will take GC scores and populate scores in TeamSideline
- Game Changer notes can be found on the website: Coaches & Volunteers/Coaches Resources or, click [here](#).



Baseball Practices

- Procedures on how to schedule a practice through the system can be found on the website: Coaches & Volunteers/Coaches Resources or, click [here](#).
- Noteables:
 - First come first serve basis except NPD programs.
 - TBD location feature (use for practices held not on a baseball field or indoors)



2024 Majors AA/Supreme AA Playoffs

Majors AA/Supreme AA
– 18 game regular
schedule

Double elimination
playoffs

Top 8 teams make it
(Winner of each division
automatically makes it)

There will be no formal
games for teams that do
not make the playoffs

Teams will be seeded
based on regular season
record.

Playoff brackets can be
found on the website in
June: Coaches &
Volunteers/Coaches
Resources or, click [here](#).

Tie breaker:

- Head-to-head (if 2 teams involved)
- Runs allowed for the season
- Coin flip

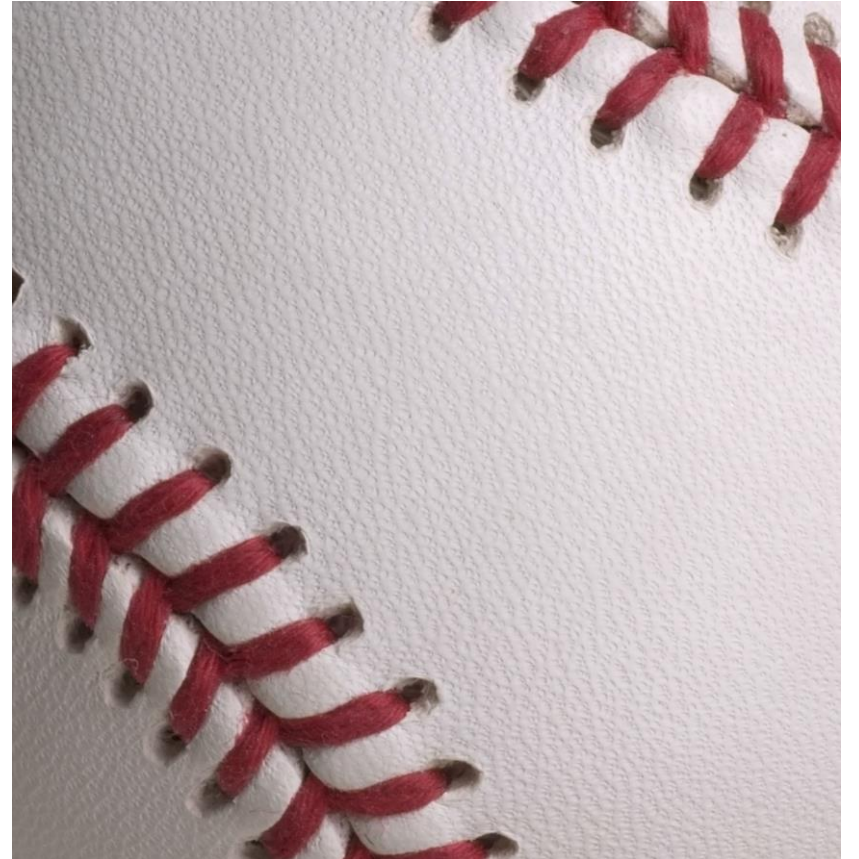
Umpires

- Our umpires are going to miss calls, just like the pros; accept it and move on
- ZERO tolerance for umpire abuse
- Submit your umpire evaluation forms so our Chief Umpire and Umpire Coordinators can work with the kids
- Umpire evaluation forms can be found on the website: Coaches & Volunteers/Coaches Resources or, click [here](#).



Miscellaneous

- Coaching mentor program - David Page
- Sponsors – Lisa sent you their information
- Coaches Clinic – April 13 @ Knoch 4
- Rookies Welcome – April 19 @ Madison Jr. High
- Dupage Turf Grand Opening – May 11 @ 9am
- City Championship – June 29
- 2025 drafted tryout dates
 - Continental/National Leagues – July 13 (July 14 rain date)
 - Republic League – July 20 (July 21 rain date)
- See [calendar page](#) at nllb.org for above dates and more
- All the information you will need for the season can be found on the website: Coaches & Volunteers/Coaches Resources or click [here](#).



REMEMBER WHAT'S IMPORTANT

Structure your practice, but keep it fun

You have a HUGE impact on these kids

The kids move on 5 minutes after the game regardless of the score, but they will never forget a coach who treated them well

Remember, people will not remember what you said to them, but they always remember how you make them feel