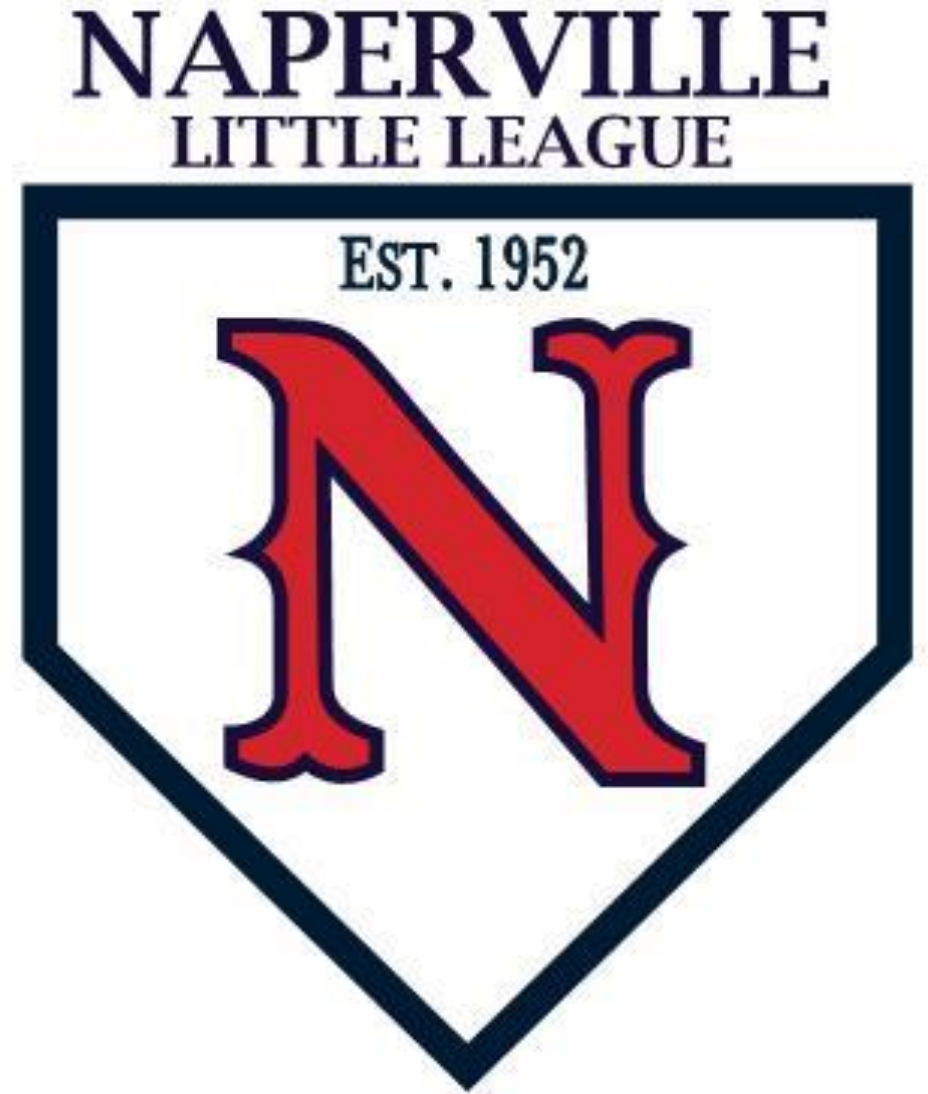


2024 Rookies A (1st grade)
& Rookies AA (2nd grade)
Manager Meeting



2024 NLLB Board of Directors

Contact information is on the website or click [here](#) to access contact information.

President: David Page

Vice President: Jim Meurer

Continental League Director: Jeff Calihan

National League Director: Doug Spitler

Republic League Director: Eddie Adams

Junior League Director: Stefan Rand

Director of Operations: Lisa O'Rear



Naperville Little League Divisions of Play

Division Name	League Name
Junior AA	Drafted 13/14 year olds league. Tryouts in summer prior to season
Junior A	Non drafted 7th and 8th grade league. Registration January – March 15
Majors AA	Drafted 11/12 year olds league. Tryouts in summer prior to season
Majors A	Non drafted 5th and 6th grade league. Registration January – March 15
Supreme AA	Drafted 9/10 year old league. Tryouts in summer prior to season
Supreme A	Non drafted 3rd and 4th grade league. Registration January – March 15
Rookies AA	Recreational baseball for 2nd graders. Registration January – March 15
Rookies A	Recreational baseball for 1st graders. Registration January – March 15

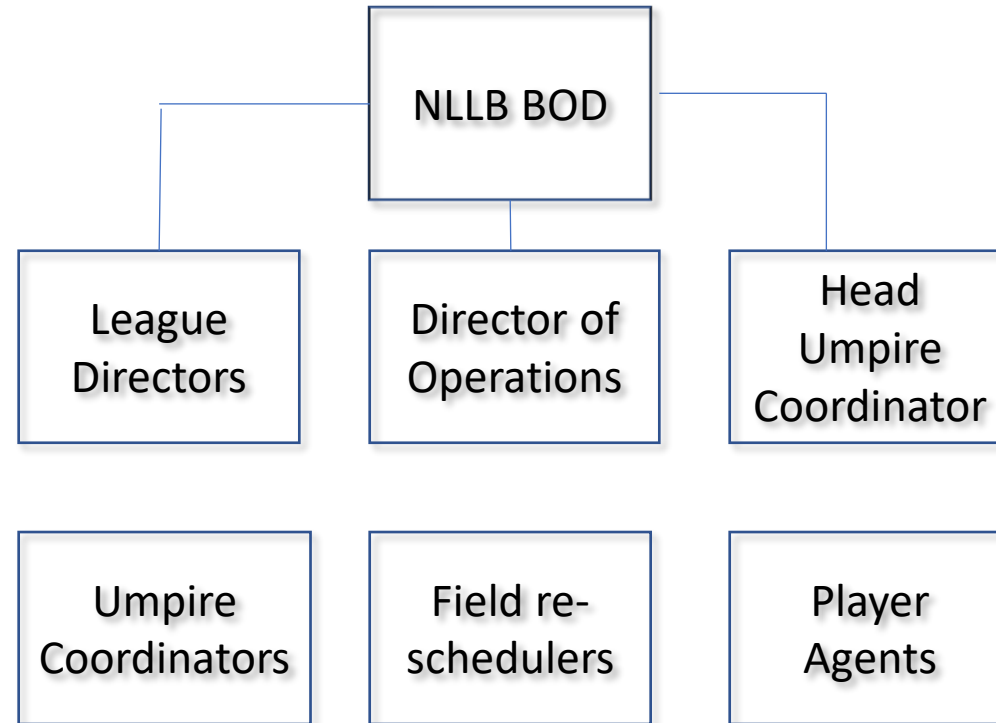
2024 Managers

YOU are the face of the league

- There are 15 Rookies A teams (CL(7) Division and NL(5) /RL(3) division)
- There are 18 Rookies AA teams (CL(8) division and NL(5)/RL(5) division)
- Thank you for all you do. We are here to help and get you what you need to be successful.
- MIGS. Are you on the list? Are your assistants on the list?
- Anyone volunteering in any capacity must register as a volunteer and submit to a YEARLY background check. Why do we do this?
- Information is on the website: Coaches & Volunteers/Register to be a Coach or Volunteer. Click [here](#) to become a 2024 MIGS.
- Beginning in 2024 Little League International is requiring volunteers to perform Abuse Awareness Training. Please click [here](#) for details and to complete the training.



Structure of Naperville Little League



Continental League Director: Jeff Calihan, jcalihan@nllb.org

National League Director: Doug Spitler, dspitler@nllb.org

Republic League Director: Eddie Adams, eadams@nllb.org

Junior League Director: Stefan Rand, srand@nllb.org

Director of Operations: Lisa O'Rear, lorear@nllb.org

Head Umpire Coordinator: Ginny McCormack, vmccoramack@nllb.org

Game Day Procedures

- No more than 3 coaches in the dugout
- Home team occupies 3B dugout
- Visiting team preps the field, home team breaks it down
- Remove bases, put them in the equipment box and insert base plugs.
- Repair the mound and batter's box after games
- Dugouts and equipment boxes- CLEAN UP AFTER YOURSELVES
- Close equipment boxes and secure.
- Lights are set to turn off at 8:15pm (Knoch 3 and Knoch 4)



Don't
FORGET!



Pre-game Procedures

-
- ⇒ IF NECESSARY RAKE BATTERS BOX AREA, PITCHING MOUND, AND BASE PATHS.
 - ⇒ REMOVE BASE PLUGS AND INSERT BASES. LEAVE BASE PLUGS BY FENCE ALONG 3RD BASE LINE.
 - ⇒ IF WATER PUDDLES ON FIELD USE SPONGE PADS TO SOAK UP WATER.
 - ⇒ IF FIELD IS WET FROM RAIN APPLY AND RAKE TURFACE TO INFIELD AREA (PITCHING MOUND, BATTERS BOX, INFIELD DIRT) AS NECESSARY. NEVER USE MORE THAN 4 BAGS.
 - ⇒ CHALK 1ST AND 3RD BASE FOUL LINES
 - ⇒ CHALK BATTERS BOXES
 - ⇒ **ROOKIE AA ONLY; 2ND HALF OF SEASON:** INSTALL TEMPORARY PITCHING RUBBER WITH TWO SPIKES 40' FROM HOME PLATE (OR 6' IN FRONT OF 46' PERMANENT PITCHING RUBBER ON FIELD). **NOTE:** MAY WATTS & PEMBROKE HAVE PERMANENT 40' PITCHING RUBBERS.

Post-game Procedures

- ⇒ REMOVE BASES AND BASE ANCHORS AND PUT THEM IN EQUIPMENT BOX.
- ⇒ PUT BASE PLUGS IN HOLES AT ALL 3 BASES.
- ⇒ CLOSE AND LOCK EQUIPMENT BOX.
- ⇒ IF RAKE IS OUTSIDE EQUIPMENT BOX MAKE SURE IT IS CHAINED AND LOCKED TO THE FENCE BY THE EQUIPMENT BOX.
- ⇒ MAKE SURE TRASH IS REMOVED FROM DUGOUTS (WATER BOTTLES, PAPER, LITTER.
- ⇒ IF CHALK OR TURFACE IS LOW (LESS THAN 2 BAGS) EMAIL LISA WITH FIELD NAME SO IT CAN BE REPLACED.



Field Maintenance

- NPD owns them, we rent them. The better job we do taking care of them, the more willing NPD will be to rent to us and do for us.
- No more than 4 bags of turface should be used on a field at one time. If you have to use that much, then do not play/practice on the field.
- Repair the mound and batters box after games and practices.
- If chalk/turface is low, e-mail Lisa to let her know, she is our contact with NPD. Please do not call NPD directly.
- If need turface/chalk that day, visit another major field to retrieve, but don't leave that location without any supplies.
- Dirt and grass stay separated.
- NPD is installing cameras to prevent theft.
- Information on Field Maintenance can be found on the website: Coaches & Volunteers/Coaches Resources or, click [here](#).





Pitching machines set at 40' from plate or 6' from pitching rubber

- Must carry it with you now. No leaving it at the fields. Home provides pitching machine.
- Get it calibrated the way you want it and get there early to set it up. For rookies a games, set it at 3-4. For rookies aa games, set it at 4-5.
- The more you use it, the better you get with it. Play with it at home and get it at desired speed and height.
- The kids will start to rock it. Very fun.
- Rookies AA Managers, get those kids practicing pitching now so they are ready for the 2nd ½ of the season!

THOUGHT FOR THE DAY:
LE MAKES A LOUSY UMBRELLA



Game Cancellations

- If cancelled by NPD or NLLB, an e-mail blast from system will notify everyone and your game will be rescheduled. No other action is required on your part unless you want to follow up with your team to make sure they received the message.
- If **NOT** cancelled by NPD or NLLB, go to the game in uniform or you will risk a forfeit.
 - Review NPD Field Maintenance guide
 - If you and the other manager cancel due to field conditions, call your Umpire Coordinator and Field Re-scheduler. Click [here](#) to locate contact information.
 - Do NOT leave an umpire at the field
- Your game will be rescheduled to the next available day/time teams and field are available. NO EXCEPTIONS. Saturday games do get rescheduled to Sunday typically after 11:00am.
- If weather becomes an issue, you will have 3-4 games per week, sometimes 3 games in a row.
- Information on Game Cancellation procedures, Field Re-schedulers contact information and Umpire Coordinator contact information can be found on the website: Coaches & Volunteers/Coaches Resources or, click [here](#).



Call-Ups

- League Directors or Player Agents handle call-ups when you are short players.
 - Juniors pulls from Majors AA or Majors A (**LLA 12 year old**)
 - Majors AA pulls from Majors A or Supreme AA (**LLA 10 year old**)
 - Majors A pulls from Supreme A/AA
 - Supreme AA pulls from Supreme A
 - Supreme A pulls from Rookies AA
- Rules for call-ups
 - They wear their own uniform
 - They must bat last
 - They cannot play more defensive innings than a regular player
 - They cannot pitch or catch

Dupage 5 – Turf Field



Naperville Park District™

WELCOME TO DUPAGE RIVER SPORTS COMPLEX SYNTHETIC TURF FIELD 5

This field was developed through a partnership between the Naperville Park District and Naperville Little League Baseball. Please help to protect this community asset by observing the following rules:

1. Field use by groups of 10 or more participants requires a permit. Permit-holders have priority use at all times. See below for field rental information.
2. Water is the only beverage permitted. No other food or drinks, including but not limited to soda, sport drinks, sunflower seeds, or gum is allowed on the synthetic turf. Glass containers are prohibited.
3. Naperville Park District parks and facilities are smoke and tobacco-free. Smoking is restricted to designated vehicle parking areas and adjacent streets where parking is permitted.
4. Metal spiked shoes are not allowed on the synthetic turf. Clean athletic shoes (free of mud) and plastic cleats are permissible.
5. Only freestanding field markers and sports equipment may be used on the synthetic turf. No stakes, posts, poles or markers of any kind may be driven into the field.
6. Tables and chairs are not allowed on the synthetic turf.
7. Golfing, shot putting, javelin or discus throwing is prohibited on the synthetic turf.
8. During athletic competitions all spectators must remain in designated spectator areas.
9. Whenever the Lightning Warning siren and strobe light activates, all activity must be suspended and all persons must move to a place of safety until the all-clear signal sounds.
10. Wheeled devices, including but not limited to motorized vehicles, bicycles, wagons, inline skates, scooters and skateboards are not allowed on the synthetic turf.
11. Pets are not allowed within the fenced areas.

Report any damage, vandalism or unauthorized use of the facility to Park Police at 630-601-0925. In an emergency, call 911.

SYNTHETIC TURF FIELD RENTALS

The synthetic turf field and the field lighting are available for rental. A permit is required for organized team activities. Groups of 10 or more wishing to use the synthetic turf field must obtain a permit to use the field. Please contact the Naperville Park District at 630-848-5000 for fees and availability.



Naperville
Park District™

PROTECT YOUR TURF



SUNFLOWER SEEDS



FOOD



METAL CLEATS



CHEWING GUM



TOBACCO PRODUCTS



DRIVING STAKES

630-848-5000 • NAPERVILLE.PARKS.ORG



NO METAL CLEATS

Safety

- Do not risk injuries; take a player out of the lineup if they get hurt. You can inset them back in the lineup later if feeling better. They will be skipped in the lineup and will NOT be an out
- Lightning: There are lightning detectors at major fields, once they sound, everyone goes to their car and waits for the all clear sound (or 30 minutes after last lightning). Don't risk it; if you see lightning, take cover immediately
- No peanuts in the dugout
- No warmups with bat during the game (no donuts, no on-deck circle)
- Male catchers must wear cups and throat guards
- Managers/coaches can warm up pitchers.
- All bats must have USA baseball sticker, please check before the game.
 - 1st offense: dead ball, batter out, team loses a base coach
 - 2nd offense: dead ball, batter out, manager ejected



Little League International Rules and Local Rules

- LLI rule book governs all games. Local rules can be found on the website: Coaches & Volunteers/Coaches Resources or, click [here](#).
- Some notable rules:
 - No new inning can start after 1 hour and 45 minutes except in the case of a tie. See local rules for details.
 - Two (2) mound visits per inning and the second one you must pull the pitcher. Three (3) mound visits max to a pitcher during the game.
 - Slaughter rule is 10 runs after 3.5 innings for home team. You can keep playing, but the game report should be completed and is final when a winner is determined. Pitch count is still active but not recorded for days of rest calculation.
- Pitch counts. Get someone to handle on your team and check with the other coach every half inning.
 - Full day rest = full day of rest
 - 20 pitches or less = 0 days rest
 - 21-35 pitches = 1 day rest
 - 36-50 pitches = 2 days rest
 - 51-65 pitches = 3 days rest
 - 66-75 pitches (max) for supreme aa and 85 pitches (max) for majors aa = 4 days rest
 - If a pitcher throws 41 or more pitches, he cannot catch in the same day. If a catcher catches 4 or more innings, he cannot pitch in the same day.
 - All pitchers get 8 warm up pitches in their 1st inning and thereafter they are subject to a 1 min time limit between ½ innings.
 - Roll back rule: your pitcher can finish the batter and roll back to limit. For example, a pitcher starts a batter with 33 pitches and throws 6 pitches to that batter before he is replaced. The official pitch count recorded is 35, not 39.



Pitch count rules (Rookies AA Managers – 2nd 1/2 of the season)

- Full day rest means a full day of rest.
- 20 pitches and under=0 days rest.
- 21-35 pitches=1 day rest.
- 36-50 pitches=2 day rest (50 is the Max)
- **IMPORTANT:** If pitcher goes over 41 pitches, he cannot catch. If catcher catches more than 4 innings, he cannot pitch. (1 pitch caught in an inning equals 1 inning)
- 8 warm up pitches in 1st inning and 5 for subsequent innings, that's it. Have a catcher ready between innings.
- Roll back rule: your pitcher can finish the batter and roll back to limit. *For example, a pitcher starts a batter with 49, and finish that batter.*

Umpires

- Our umpires are going to miss calls, just like the pros; accept it and move on
- ZERO tolerance for umpire abuse
- Submit your umpire evaluation forms so our Chief Umpire and Umpire Coordinators can work with the kids
- Umpire evaluation forms can be found on the website: Coaches & Volunteers/Coaches Resources or, click [here](#).



Adult Game Coordinators

- Must have when umpire is under 18
- Must be a MIGS
- Home team provides Adult Game Coordinator
- Must be introduced to the umpire
- before the game
- Assists umpire with tough decisions if needed
- Information on responsibilities of Adult Game Coordinator can be found on the website: Coaches & Volunteers/Coaches Resources or, click [here](#).



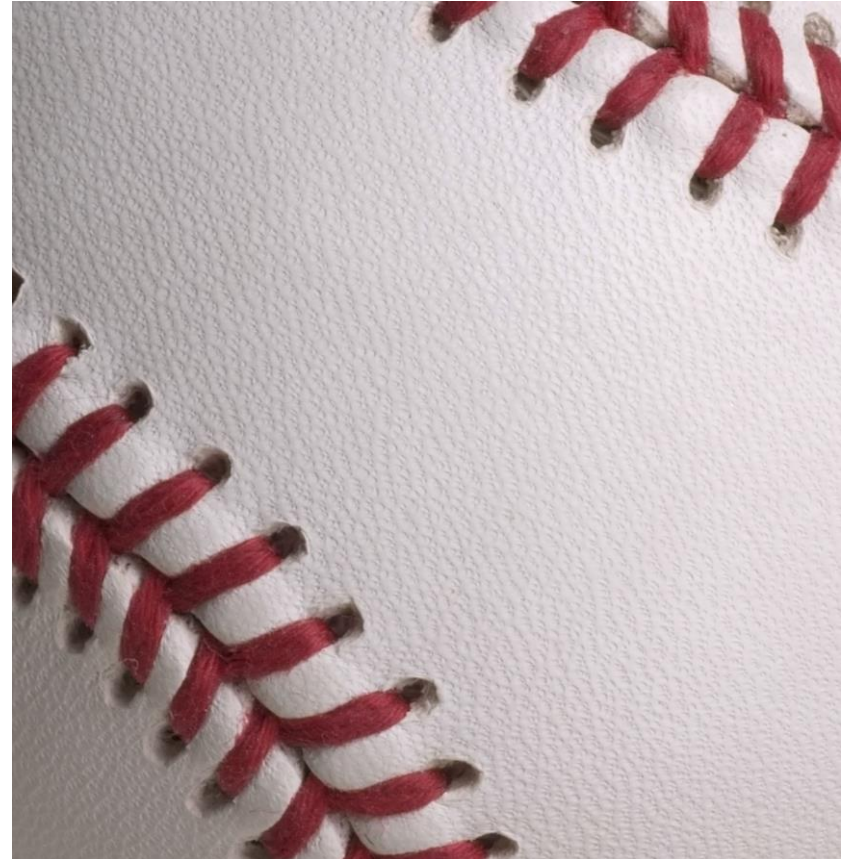
Baseball Practices

- Procedures on how to schedule a practice through the system can be found on the website: Coaches & Volunteers/Coaches Resources or, click [here](#).
- Noteables:
 - First come first serve basis except NPD programs.
 - Consider practicing on a grassy area
- No practice on: BEACH, KNOCH 5, Nike 1, Nike 3, DUPAGE 5
- NLL will not be scheduling or coordinating teams' practice schedules
- Teams should practice at least 1 time per week
- Practices do get bumped if we need the field for a game reschedule



Miscellaneous

- Lisa will reach out to you re: uniform and equipment pick up
- Coaches clinic – April 13 @ Knoch 3/4
- Coaching mentor program - David Page
- Sponsors – Lisa will send you their information
- Rookies Welcome – April 19 @ Madison Jr. High
- First game approximately April 30 – June 22
- No RAA tournament this year
- Dupage Turf Grand Opening – May 11 @ 9am
- City Championship – June 29 (Junior, MAA, MA, SAA, SA)
- See [calendar page](#) at nllb.org for above dates and more
- All the information you will need for the season can be found on the website: Coaches & Volunteers/Coaches Resources or click [here](#).



REMEMBER WHAT'S IMPORTANT

Structure your practice, but keep it fun

You have a HUGE impact on these kids

The kids move on 5 minutes after the game regardless of the score, but they will never forget a coach who treated them well

Remember, people will not remember what you said to them, but they always remember how you make them feel